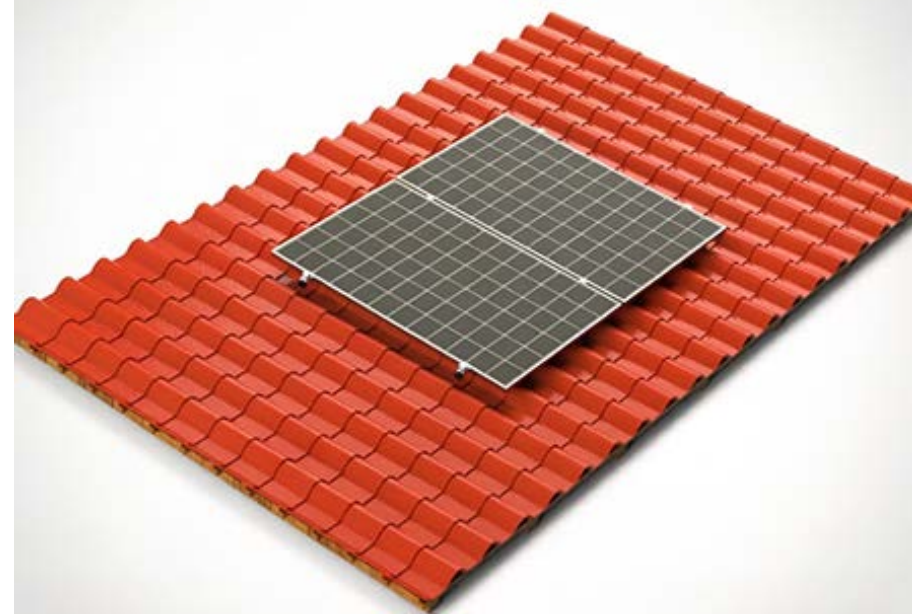


EN

DE



INSTALLATION MANUAL **INSTALLATIONSANLEITUNG**

R059&RH-0067 for tile roof (Secured via bolt)(1x2)

R059&RH-0067 für Ziegeldächer (Befestigung über Schraube)(1x2)

Recommended Installation Torque for Bolts • M8: 12–15 N·m
Empfohlenes Anzugsmoment für Schrauben • M10: 24–30 N·m

Hook Installation

Hakenmontage

Hook Positioning:

Based on the roof wooden beam structure, installation array, and rail mounting position, locate and mark the hook installation points on the corresponding tiles.

Hakenpositionierung:

Unter Berücksichtigung der Dachsparrenstruktur, der Montageanordnung und der Schienenbefestigungsposition die entsprechenden Hakenmontagepunkte auf den Dachziegeln lokalisieren und markieren.



Hook Installation:

According to the tile structure, open the corresponding tile (push it upward to expose it, or remove it).

Pre-install the hook, select the hook installation position according to the condition of the wooden beam and tiles at the installation point. (usually central, or side holes if central installation is obstructed).

Adjust the bent arm up or down to the required height, then tighten the bolt assembly between the base plate and the bent arm.

Fix the hook to the wooden beam at the designated position using wood screws. For some beams where direct fastening is difficult, pre-drill pilot holes with a drill bit before driving in the wood screws.

After securing, adjust its top height, tighten the bent arm and the top assembly bolts, and ensure all hooks align horizontally for rail installation.

After the hooks are installed, reinstall the tile properly to prevent water leakage.

Hakenmontage:

Entsprechend der Ziegelstruktur den entsprechenden Ziegel öffnen (nach oben schieben, um ihn freizulegen, oder entfernen).

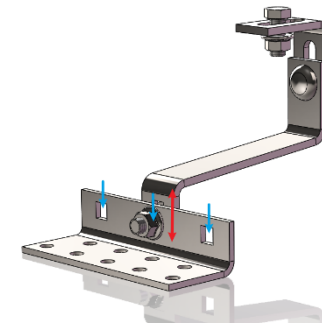
Den Haken vorinstallieren, die Hakenmontageposition je nach Zustand des Holzträgers und der Ziegel am Montagepunkt wählen (in der Regel mittig, oder seitliche Löcher, wenn die mittige Montage behindert ist).

Den gebogenen Arm nach oben oder unten auf die erforderliche Höhe einstellen, dann die Schraubverbindung zwischen Grundplatte und gebogenem Arm festziehen.

Den Haken mit Holzschrauben am Holzträger an der vorgesehenen Position befestigen. Bei einigen Trägern, bei denen die direkte Befestigung schwierig ist, zuerst mit einem Bohrer Vorbohrungen anfertigen, bevor die Holzschrauben eingedreht werden.

Nach der Befestigung die obere Höhe anpassen, die Schrauben des gebogenen Arms und der oberen Baugruppe festziehen und sicherstellen, dass alle Haken horizontal ausgerichtet sind, um die Schienenmontage zu ermöglichen.

Nach der Installation der Haken den Ziegel ordnungsgemäß wieder anbringen, um Wassereintritt zu verhindern.



Rail Installation

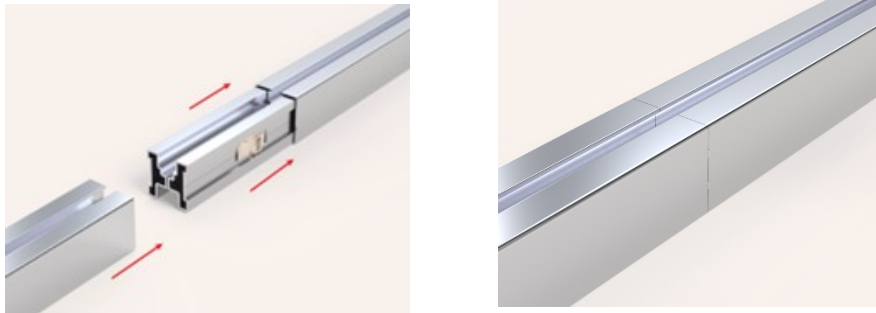
Schienenmontage

Rail Connection:

Connect two rails using rail connectors (2 per joint). Insert the connectors firmly into place, the spring clips will lock the rails securely.

Schienenverbindung:

Schienenverbindung: Verbinden Sie zwei Schienen mithilfe von Schienenverbindern (2 pro Verbindung). Stecken Sie die Verbinder fest ein; die Federklammern fixieren die Schienen sicher.

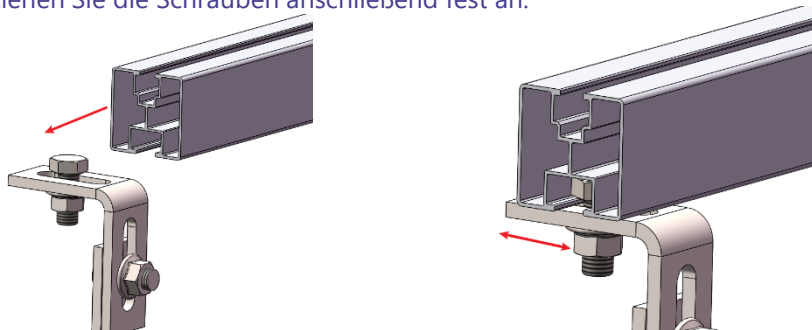


Rail Installation:

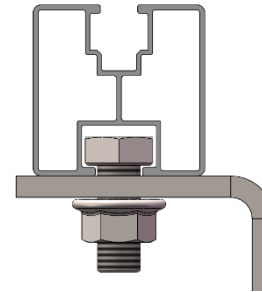
Slide the rail into place so that the bolt heads engage into the bottom slot of the rail. Adjust the rail position and then tighten the bolts securely.

Schienenmontage:

Schieben Sie die Schiene so in Position, dass die Schraubköpfe in die untere Nut der Schiene einrasten. Justieren Sie die Position der Schiene und ziehen Sie die Schrauben anschließend fest an.

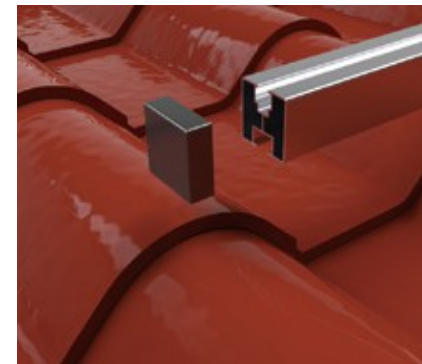


(Please continue reading the content on the back)



End Cap Installation: Attach end caps to both ends of the rail, ensuring a secure fit. (End cap designs may vary slightly, please refer to the actual one).

Endkappen-Montage: Stecken Sie die Endkappen an beiden Seiten der Schiene ein und drücken Sie sie fest ein, bis sie einrasten (Hinweis: Die Form der Endkappen kann je nach Modell leicht variieren).



Rail Installation Complete.

Schienenmontage fertiggestellt.



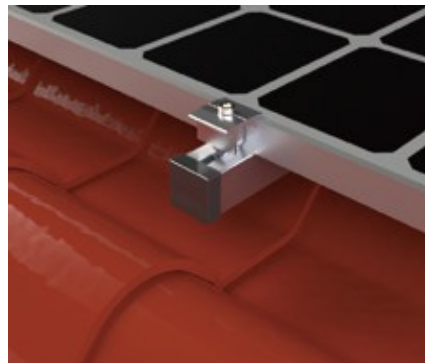
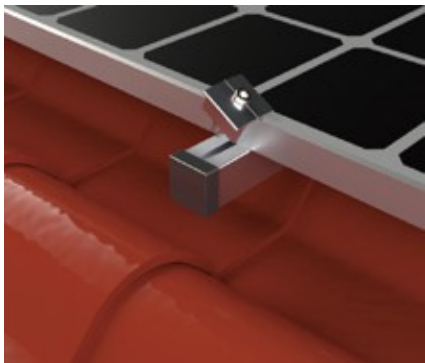
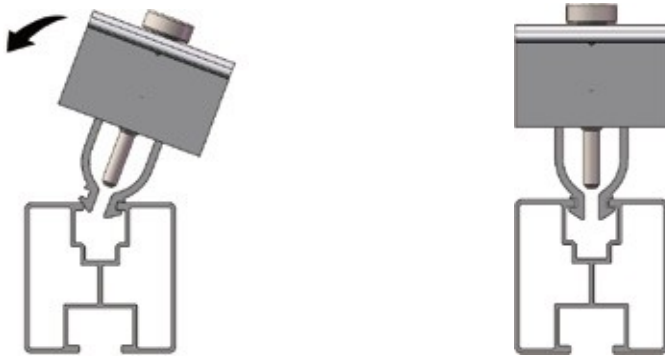
(Please continue reading the content on the back)

Solar Panel Installation

Modulinstallation

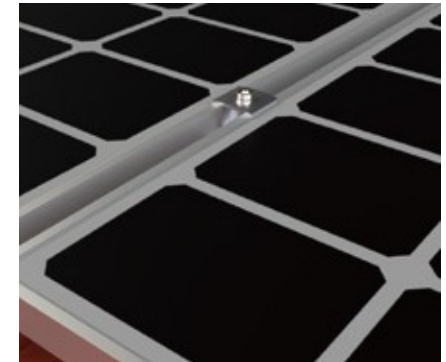
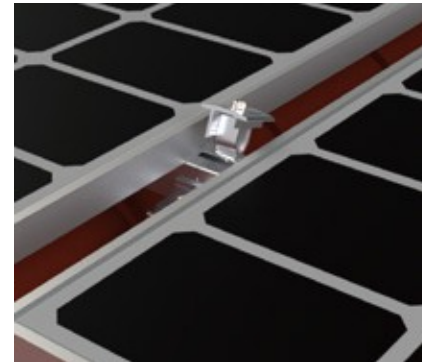
End Clamp Installation: Insert one side of the end clamp to the rail, rotate it into place, adjust to secure the panel, and tighten the bolts.

Endklemmen-Montage: Setzen Sie eine Seite der Endklemme an der Schiene an. Dann drehen Sie die Klemme mit leichtem Druck in die Schiene, bis sie vollständig einrastet. Positionieren Sie die Klemme so, dass sie den Modulrahmen sicher umgreift. Dann Ziehen Sie die Befestigungsschraube fest.

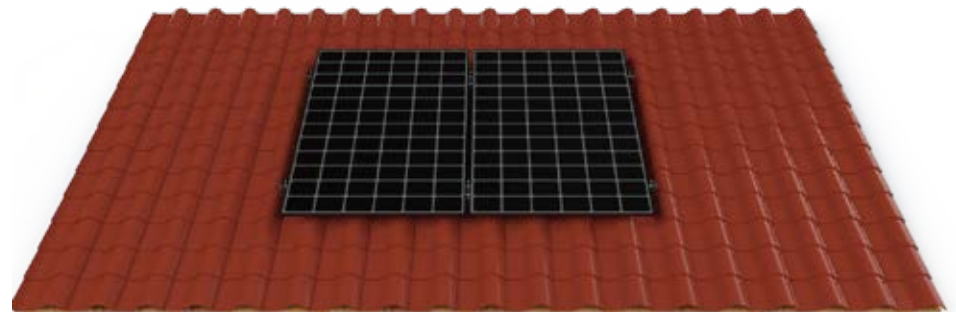


Mid Clamp Installation: Leave a gap, insert the mid clamp into the rail, push the panel tightly against it, and secure with bolts.

Mittelklemmen-Montage : Lassen Sie zwischen den Modulen zunächst einen kleinen Spalt für die Klemme. Setzen Sie die Mittelklemme mittig in die Schiene ein. Dann schieben Sie die angrenzenden PV-Module fest zusammen. Positionieren Sie die Mittelklemme so, dass sie beide Modulrahmen gleichmäßig erfasst. Ziehen Sie die Befestigungsschraube gleichmäßig an.



Installation Complete.
Installation abgeschlossen.



Purchaser/End User/Installer Notice:

Purchasers should confirm whether they are able to install this product and obtain relevant permits in accordance with local laws and regulations, including but not limited to government, community, adjacent property owners, and property rights holders.

Purchasers should engage qualified installers, professionals, or self-install only where permitted by law.

Purchasers should also ensure that the installation supports the building or its accessories safely and meets installation requirements, and is sufficient to support the product and its photovoltaic power generation system for over 20 years.

Purchasers should not install or use this product in environments with corrosive air or water, such as acids or alkalis in the vicinity.

Purchasers should fully assess and bear the consequences of product installation and usage and their impact on the surroundings, including but not limited to potential lightning strikes, electrical or magnetic conduction, light reflection/pollution, obstruction of passage, collision with people, snow accumulation and ice shedding, depreciation of buildings, and their consequences.

Purchasers are solely responsible for safety during installation, throughout the installation process, and subsequent usage, and/or any impact on third parties.

After installing the product, purchasers or their appointed installers should carry out waterproof, leak-proof, and anti-seepage construction at the junction of the product and the building to protect the building supporting the product, and conduct periodic inspections and maintenance in the future (at intervals not exceeding 1 year).

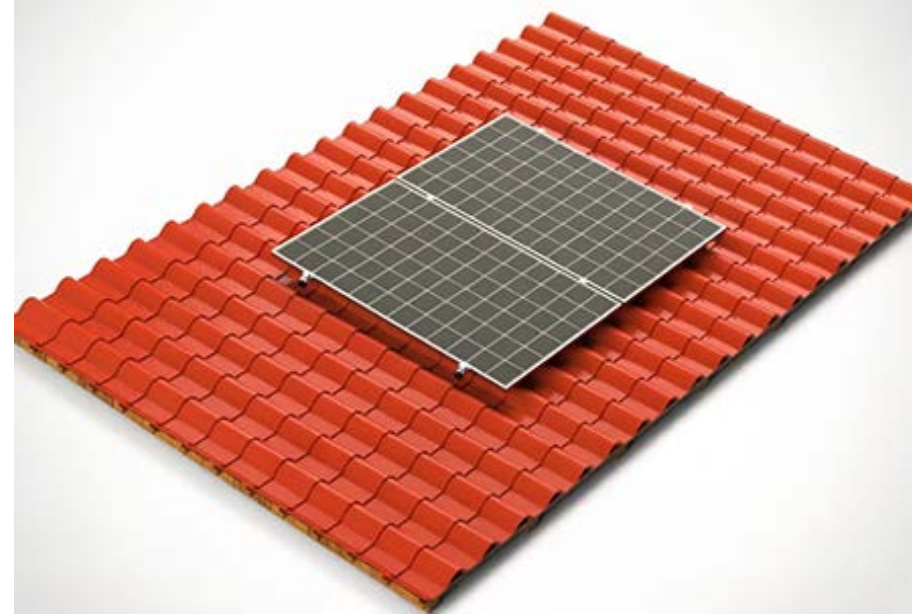
Purchasers should be aware that nothing other than the photovoltaic power generation system should be supported on this product, and no additional weight should be placed on the product during installation or subsequent usage, particularly human suspension or leaning. It should not be used for any purpose other than supporting photovoltaic brackets. Purchasers should be aware that nothing other than the photovoltaic power generation battery system should be supported on this product, and no additional weight should be placed on the product during installation or subsequent usage,

particularly human suspension or leaning. It should not be used for any purpose other than supporting photovoltaic brackets.

We shall not be liable for any consequences resulting from failure to comply with local legal requirements and/or failure to follow instructions, warnings, etc., during the installation of this product, nor shall we be liable for any losses to the supporting building or any third party resulting from the installation process or subsequent usage, nor shall we be liable for any multiple installations, disassembly and reuse, or second-hand purchases of this product.

FR

IT



MANUEL D'INSTALLATION MANUALE DI INSTALLAZIONE

Rail R059 + Crochet RH-0067 pour toit en tuiles (Fixation par boulons) (1x2)

R059&RH-0067 per tetto a tegole (fissaggio con bulloni) (1x2)

Couple de serrage recommandé pour les boulons • M8: 12–15 N·m
Forza di serraggio consigliata • M10: 24–30 N·m

Installation des crochets

Installazione dei ganci

Positionnement des crochets:

Selon la structure des poutres en bois, la disposition des panneaux et l'emplacement des rails, marquez la position d'installation des crochets sur les tuiles correspondantes.

Posizionamento del gancio:

In base alla struttura delle travi in legno e alla posizione di montaggio dei binari, individuare e contrassegnare i punti di installazione dei ganci sulle tegole corrispondenti.



Installation des crochets

Selon la structure des tuiles correspondantes, soulevez la tuile pour la dégager ou retirez-la.

Pré-installez le crochet, puis choisissez le trou de fixation en fonction de la position de la poutre et des tuiles (normalement au centre, sinon utilisez les trous latéraux si l'installation au centre est impossible).

Ajustez la hauteur du bras coudé vers le haut ou le bas, puis serrez les boulons reliant la plaque de base et le bras.

Fixez le crochet sur la poutre en bois à l'aide de vis à bois. Si la poutre ne permet pas un vissage direct, percez d'abord un trou de guidage avant de visser.

Une fois les crochets fixés, ajustez la hauteur du sommet du crochet et serrez les boulons afin que tous les crochets soient à la même hauteur, garantissant ainsi l'installation correcte des rails.

Après l'installation des crochets, remettez les tuiles en place et assurez-vous qu'elles sont correctement replacées pour éviter toute infiltration d'eau.

Installazione del gancio:

Per prima cosa, in base alla tipologia di tegola, sollevarla o rimuoverla per scoprire l'area di lavoro.

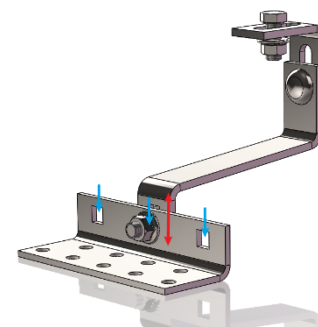
Preinstallazione dei ganci: posizionare i ganci in base alla situazione delle travi e delle tegole (generalmente per fissare si utilizza il foro centrale ma per adattarsi alle varie necessità si possono utilizzare anche i fori laterali)

Regolare il gancio all'altezza desiderata e serrare i bulloni

Utilizzare i vitoni per legno per inchiodare i ganci alle travi di legno corrispondenti. Alcune travi di legno potrebbero non essere avvitabili direttamente, in tal caso si consiglia di praticare dei fori guida in anticipo e poi avvitare i vitoni per legno.

Dopo aver fissato i ganci, regolare l'altezza della parte superiore di ciascun gancio e serrare tutti i bulloni, in modo da garantire che tutti i ganci siano allineati orizzontalmente e consentire l'installazione dei binari.

Dopo aver installato i ganci, riposizionare le piastrelle, assicurandosi che siano installate correttamente per evitare perdite d'acqua.



Installation des rails

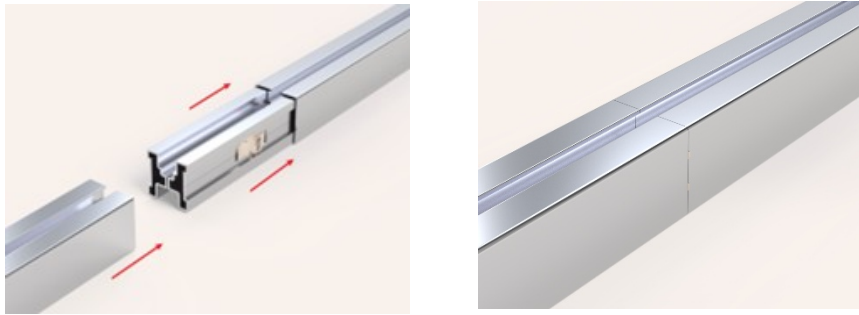
Installazione dei binari

Installation des rails

Reliez deux rails avec des connecteurs. Il faut 2 connecteurs par jonction. Enfoncez-les bien, le ressort va bloquer les rails automatiquement.

Installazione dei connettori per binary

Installazione dei connettori: collegare due binari utilizzando l'apposito connettore. Inserire il connettore esercitando una pressione adeguata; le clip rialzate garantiscono il bloccaggio sicuro dei binari.

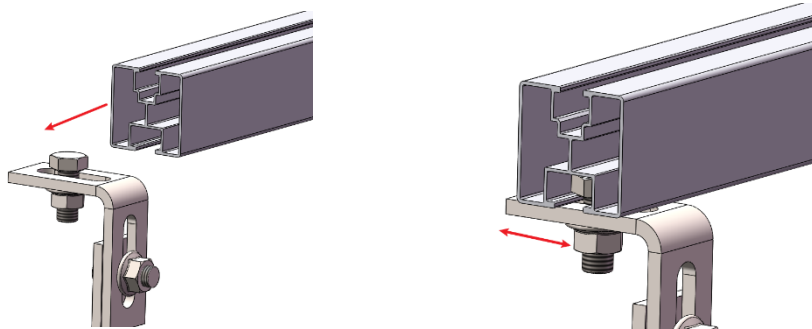


Installation du rail

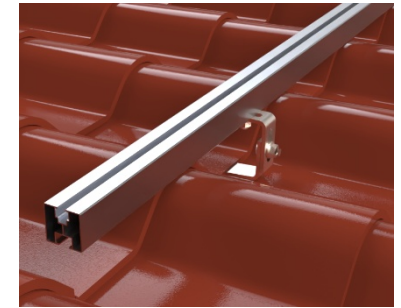
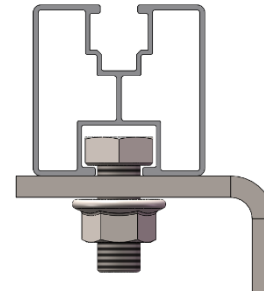
Faites glisser le rail pour mettre les boulons dans la fente en bas du rail. Ajustez la position du rail et serrez les boulons.

Installazione dei binari

Fai scorrere le teste dei bulloni nella scanalatura inferiore del binario. Regola la posizione del binario, quindi serra saldamente i bulloni.

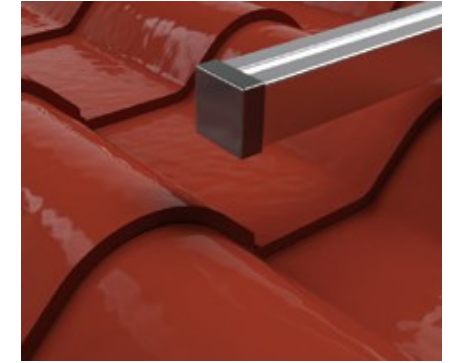


(Please continue reading the content on the back)



Installation des capuchons: Installez les capuchons aux deux extrémités du rail et assurez-vous qu'ils s'enclenchent correctement (le style des capuchons peut varier légèrement, veuillez vous référer au produit réel).

Installazione del tappo per binario: Fissare i tappi a entrambe le estremità del binario, assicurandosi del corretto e saldo inserimento. (Il design dei tappi può variare leggermente; fare riferimento al prodotto effettivo).



L'installation des rails est terminée.

Installazione del binario completato.



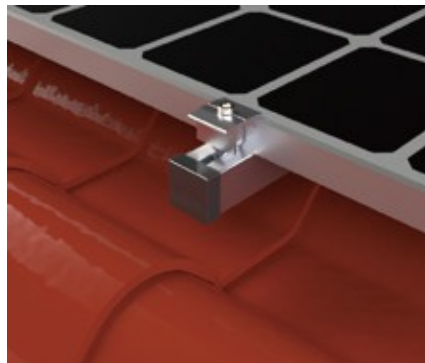
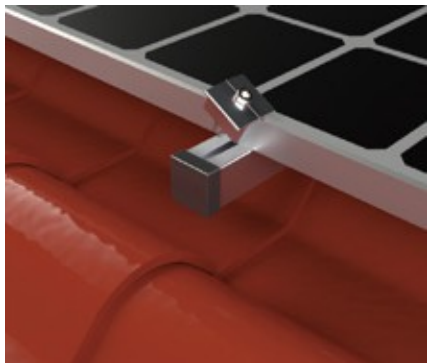
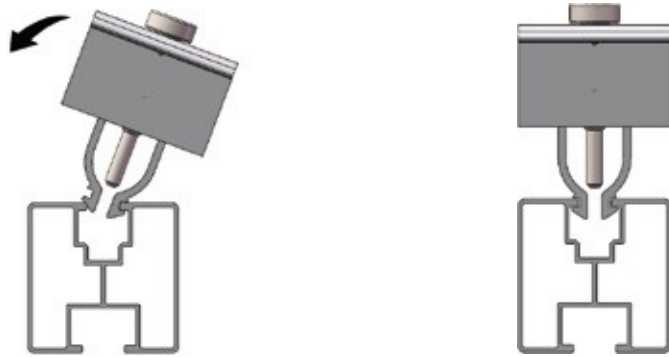
(Please continue reading the content on the back)

Installation des panneaux

Installazione del pannello solare

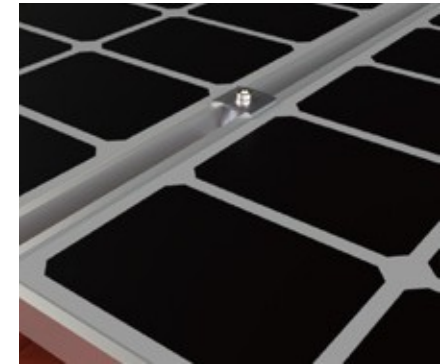
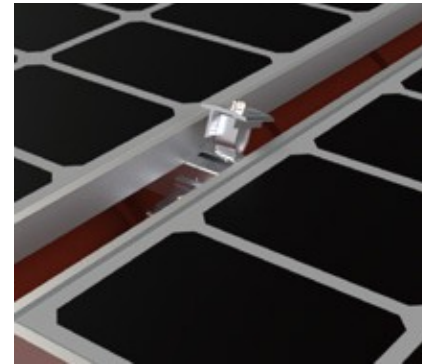
Installation des pinces d'extrémité: Coincez un côté de la pince d'extrémité sur le rail, tournez-la pour l'insérer, ajustez la position pour maintenir le panneau, puis serrez les boulons

Installazione del morsetto finale: Inserire un lato del morsetto nel binario, spingere con forza fino al completo incastro. Regolare quindi la posizione del pannello e serrare saldamente i bulloni.



Installation de la pince centrale: Laissez un espace, insérez la pince centrale dans le rail, poussez les panneaux pour qu'ils soient serrés par la pince, puis serrez les boulons.

Installazione con morsetto centrale: Lasciare un piccolo spazio, poi inserire il morsetto centrale nel binario. Poi spingere i pannelli verso il morsetto in modo che li blocchi entrambi, e serrare il bullone.



Installation terminée.
Installazione completata.



Purchaser/End User/Installer Notice:

Purchasers should confirm whether they are able to install this product and obtain relevant permits in accordance with local laws and regulations, including but not limited to government, community, adjacent property owners, and property rights holders.

Purchasers should engage qualified installers, professionals, or self-install only where permitted by law.

Purchasers should also ensure that the installation supports the building or its accessories safely and meets installation requirements, and is sufficient to support the product and its photovoltaic power generation system for over 20 years.

Purchasers should not install or use this product in environments with corrosive air or water, such as acids or alkalis in the vicinity.

Purchasers should fully assess and bear the consequences of product installation and usage and their impact on the surroundings, including but not limited to potential lightning strikes, electrical or magnetic conduction, light reflection/pollution, obstruction of passage, collision with people, snow accumulation and ice shedding, depreciation of buildings, and their consequences.

Purchasers are solely responsible for safety during installation, throughout the installation process, and subsequent usage, and/or any impact on third parties.

After installing the product, purchasers or their appointed installers should carry out waterproof, leak-proof, and anti-seepage construction at the junction of the product and the building to protect the building supporting the product, and conduct periodic inspections and maintenance in the future (at intervals not exceeding 1 year).

Purchasers should be aware that nothing other than the photovoltaic power generation system should be supported on this product, and no additional weight should be placed on the product during installation or subsequent usage, particularly human suspension or leaning. It should not be used for any purpose other than supporting photovoltaic brackets. Purchasers should be aware that nothing other than the photovoltaic power generation battery system should be supported on this product, and no additional weight should be placed on the product during installation or subsequent usage,

particularly human suspension or leaning. It should not be used for any purpose other than supporting photovoltaic brackets.

We shall not be liable for any consequences resulting from failure to comply with local legal requirements and/or failure to follow instructions, warnings, etc., during the installation of this product, nor shall we be liable for any losses to the supporting building or any third party resulting from the installation process or subsequent usage, nor shall we be liable for any multiple installations, disassembly and reuse, or second-hand purchases of this product.